

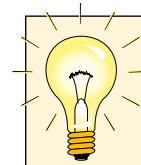
# Heavy Duty Caterroller™ Load Skates

▼ Shown: Set ERS-20



- Rugged and sturdy construction for long life
- Low profile construction for increased stability
- Low rolling-resistance allows for easy transportation
- Attachable load leveling plates and swivel turntables for turning corners.

## Move Heavy Loads Easily and Safely



Sets (see table) include all components necessary to handle a variety of applications.

Two **ELB-1** link-up bars, two **ERH-1** handles (880 mm long) and one **EMB-1** metal box are included.

Optional long handle **ERH-2** (1295 mm) available for 60 and 80 ton only.



### Lifting Wedge and Machine Lifts



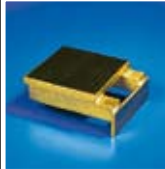
To place the Load Skates, the load must first be lifted.

This can be done easily and safely using the Enerpac Lifting Wedge or Machine Lifts.

Page: 172



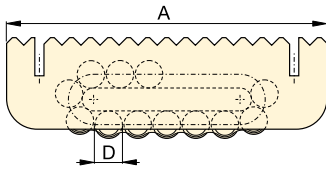
▼ Load Skates may be ordered separately or as a matched set.

Set Capacity*	Set Model Number	Load Skates (4x)	Turntable Swivels (2x)	Leveling Plates (2x)	Weight Including handles and metal box
ton (kN)					(kg)
20 (178)	<b>ERS-20</b>	ER-10	ES-10	ELP-10	49
30 (267)	<b>ERS-30</b>	ER-15	ES-15	ELP-15	55
60 (533)	<b>ERS-60</b>	ER-30	ES-30	ELP-30	75

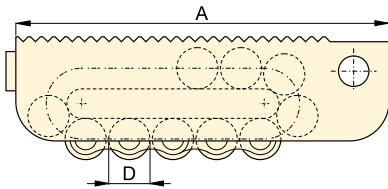
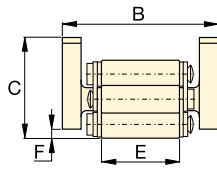
\* Sets are designed to enable two skates to take full load for extra safety on uneven floor surfaces

◀ Heavy transport using Load Skates. The machine is first lifted, using SOH-Series Enerpac Machine Lifts.

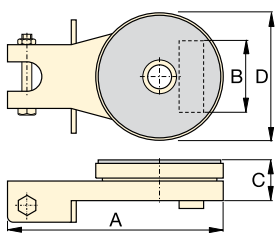
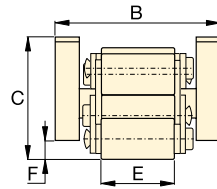
# Heavy Duty Caterroller™ Load Skates



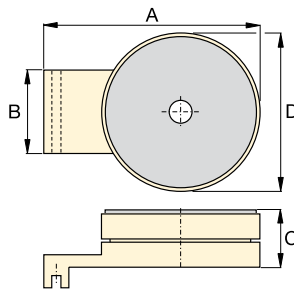
ER-1, ER-10, ER-15, ER-30



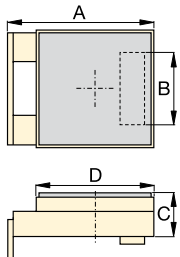
ER-60, ER-80



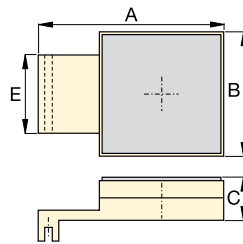
Turntable Swivel  
ES-1, ES-10, ES-15, ES-30



Turntable Swivel  
ES-60, ES-80



Leveling Plate  
ELP-10, ELP-15, ELP-30



Leveling Plate  
ELP-60, ELP-80



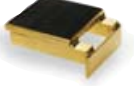
**EL  
ER  
ES  
Series**



Maximum Carrying Capacity:  
**80 ton**

▼ Chemical tank transportation: The first few centimetres the load was lifted with RCS-Series low height cylinders and then moved on to load skates for transportation.



	Capacity* ton (kN)	Model Number	Dimensions (mm)						Contact Rolls per Skate	Rollers per Skate	⚖️ (kg)
			A	B	C	D	E	F			
 Load Skates	1 (8,9)	ER-1	160	100	65	18	51	4	4	11	3,8
	10 (89)	ER-10	210	102	66	18	51	6	5	15	5,2
	15 (133)	ER-15	220	115	75	24	60	10	4	13	7,3
	30 (267)	ER-30	270	130	92	30	68	10	4	13	13,0
	60 (533)	ER-60	380	168	125	42	76	16	4	13	31,9
	80 (711)	ER-80	530	182	145	50	86	19	6	17	60,9
 Turntable Swivel	1 (8,9)	ES-1	207	86	26	90	-	-	-	-	1,1
	10 (89)	ES-10	220	73	42	130	-	-	-	-	3,7
	15 (133)	ES-15	220	86	42	130	-	-	-	-	3,7
	30 (267)	ES-30	250	96	48	150	-	-	-	-	5,3
	60 (533)	ES-60	275	114	61	190	-	-	-	-	13,7
	80 (711)	ES-80	360	128	61	220	-	-	-	-	18,9
 Leveling Plate	10 (89)	ELP-10	149	73	42	120	-	-	-	-	3,7
	15 (133)	ELP-15	149	86	42	120	-	-	-	-	3,7
	30 (267)	ELP-30	178	96	48	130	-	-	-	-	5,3
	60 (533)	ELP-60	270	114	61	180	-	-	-	-	13,8
	80 (711)	ELP-80	350	128	61	200	-	-	-	-	18,8