

▼ Shown: **MS2-10**



- All sets include Enerpac pump, hose, cylinder and gauge
- Lock-on or threaded connectors
- Complete maintenance set for almost every maintenance application.



◀ *Clamping a workpiece is just one of the many applications for the Enerpac maintenance sets.*

The Universal Hydraulic Tool Box



Maintenance Sets

Enerpac Maintenance sets are a complete assortment of hydraulic powered tools. Using these sets allows you to quickly configure a unique tool to meet your most difficult jobs. Built around the Enerpac lightweight hand pump, hose and cylinder, these sets enable you to push, pull, lift, press, straighten, spread and clamp with forces up to 12,5 ton.









More Information

For detailed information on all included attachments, see the next pages.

Page: **166**

▼ QUICK SELECTION CHART

Capacity using attachments* ton (kN)	Set Model Number						Number of Attachment Components	 (kg)
2,5 (22)	MS2-4	P-142	HC-7206	RC-55	GP-10S	GA-4	35	26
2,5 (22)	MSFP-5	P-142	HC-7206	RC-55	G2535L	GA-3	24	20
5,0 (50)	MSFP-10	P-392	HC-7206	RC-106	G2535L	GA-3	22	48
5,0 (50)	MS2-10	P-392	HC-7206	RC-106	GP-10S	GA-2	40	63
12,5 (116)	MS2-20	P-392	HC-7206	RC-256	GP-10S	GA-2	19	95
5,0-12,5 (50-116)	MS2-1020	P-392	HC-7206	RC-102, -106, -256	GP-10S	GA-2	59	158

* If no attachments are being used, capacity is double these values. Maximum operating pressure is then 700 bar.

Universal Maintenance Sets



CAUTION!

When cylinders are used with maintenance set attachments or components, the maximum system pressure must be limited to half the rated pressure (350 bar).



WARNING!

Only use attachments provided with set. Non-Enerpac attachments and longer extension tubes will reduce column strength, potentially creating unsafe conditions.

MS Series



Capacity (using attachments):

2,5 - 12,5 ton

Maximum Operating Pressure:

350 bar

▼ APPLICATION EXAMPLES




MS-Series, Maintenance Sets



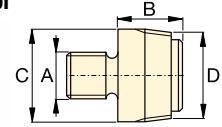
CAUTION! When cylinders are used with maintenance set attachments or components, the maximum system pressure must be limited to half the rated pressure (350 bar).

Note: All dimensions in millimetres.

Set Model Number	MS2-4	MSFP-5	MSFP-10	MS2-10	MS2-20	MS2-1020
Base, Collar and Plunger Attachments	2,5 ton	2,5 ton	5,0 ton	5,0 ton	12,5 ton	5,0 - 12,5 ton
Cylinder Model(s)	RC-55	RC-55	RC-106	RC-106	RC-256	RC-102, 106, 256
1	A-23	A-23	A-13	A-13	A-28	A-13, A-28
2	A-25	A-25	A-21	A-21	A-27	A-21, A-27
3	A-1034	A-1034	A-20	A-20	A-595	A-20, A-595
4	MZ-4010	MZ-4010	A-14	A-14	A-243	A-14, A-243
5	A-545	A-545	A-10	A-10	-	A-10 (2x)
6	-	-	-	A-8	-	A-8
7	A-530	A-530	A-6	A-6	-	A-6
8	MZ-4011	-	-	A-192	-	A-192
9	-	-	-	A-305	-	A-305
10	A-531	A-531	A-18	A-18	-	A-18
11	-	-	-	A-185	-	A-185
12	A-532	A-532	A-15	A-15	-	A-15
13	-	-	-	-	A-607	A-607
14	A-629	A-629	A-129	A-129	-	A-129
15	A-539	A-539	A-128	A-128	-	A-128
Chains and Attachments for Pulling Applications	2,5 ton	2,5 ton	5,0 ton	5,0 ton	12,5 ton	5,0 - 12,5 ton
16	A-558	-	-	A-132	A-238	A-132, A-238
17	-	-	-	A-5 (2x)	-	A-5 (2x)
18	A-557 (2x)	-	-	A-141 (2x)	A-218 (2x)	A-141 (2x), A-18 (2x)
Extension Tubes, Connectors and Adaptors	2,5 ton	2,5 ton	5,0 ton	5,0 ton	12,5 ton	5,0 - 12,5 ton
19	A-544	-	-	A-19 (2x)	A-242 (2x)	A-19 (2x) A-242 (2x)
20	WR-5	WR-5	WR-5	A-92	-	A-92
21	MZ-4013 (4x)	MZ-4013 (4x)	A-16 (4x)	A-16 (4x)	-	A-16 (4x)
22	MZ-4017 (3x)	MZ-4017 (3x)	MZ-1050 (2x)	MZ-1050 (2x)	-	MZ-1050 (3x)
23	MZ-4008 (2x)	-	-	MZ-1051	-	MZ-1051 (2x)
24	MZ-4009	MZ-4009	MZ-1052	MZ-1052	-	MZ-1052
25	-	-	-	A-285	-	A-285
26	A-650	-	-	-	-	-
27 Length (mm)	76	MZ-4002	MZ-4002	-	-	-
	127	MZ-4003	MZ-4003	MZ-1002	MZ-1002	MZ-1002
	254	MZ-4004	MZ-4004	MZ-1003	MZ-1003	A-239 MZ-1003
	254					A-239
	457	MZ-4005 (2x)	MZ-4005 (2x)	MZ-1004	MZ-1004	A-240 MZ-1004 (2x)
	457					A-240
	584	MZ-4006 (2x)	MZ-4006 (2x)	-	-	-
	762	-	-	MZ-1005	MZ-1005	A-241 MZ-1005 (2x)
	762					A-241
28 Storage Case	CM-6	CM-6	CW-350	CW-350	CW-350	MK-05
Set Weight (kg)	26	20	48	63	95	158

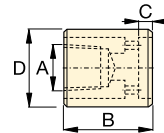
Base, Collar and Plunger Attachments

1 Threaded Adaptor



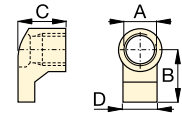
ton	Model Nr.	A	B	C	D
2,5	A-23	3/4" - 16 UN	28	26	3/4" - 14 NPT
5,0	A-13	1" - 8 UN	31	42	1 1/4" - 11 1/2 NPT
12,5	A-28	1 1/2" - 16 UN	47	69	2" - 11 1/2 NPT

2 Base Attachment



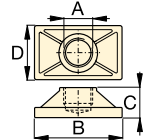
ton	Model Nr.	A	B	C	D
2,5	A-25	3/4" - 14 NPT	50	12	44
5,0	A-21	1 1/4" - 11 1/2 NPT	57	12	65
12,5	A-27	2" - 11 1/2 NPT	63	12	98

3 Collar Toe



ton	Model Nr.	A	B	C	D
2,5	A-1034	1 1/2" - 16 UN	54	50	31
5,0	A-20	2 1/4" - 14 UN	80	57	57
12,5	A-595	3 5/16" - 12 UN	103	51	80

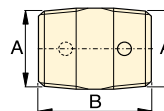
4 Flat Base



ton	Model Nr.	A	B	C	D
2,5	MZ-4010	3/4" - 14 NPT	114	31	63
5,0	A-14	1 1/4" - 11 1/2 NPT	165	35	88
12,5	A-243*	2" - 11 1/2 NPT	165	58	165

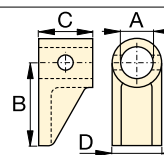
* A-243 is a round base model.

5 Threaded Connector



ton	Model Nr.	A	B
2,5	A-545	3/4" - 14 NPT	35
5,0	A-10	1 1/4" - 11 1/2 NPT	41

6 Lock-on Clamp Toe



ton	Model Nr.	A	B	C	D
5,0	A-8	43	105	50	57

Universal Maintenance Sets, MS-Series

7 Threaded Plunger Toe

ton	Model Nr.	A	B	C	D
2,5	A-530	3/4" - 14 NPT	57	25	33
5,0	A-6	1 1/4" - 11 1/2 NPT	82	31	57

14 Wedge Head

ton	Model Nr.	A	B	C	D
2,5	A-629	3/4" - 14 NPT	69	33	28
5,0	A-129	1 1/4" - 11 1/2 NPT	101	50	44

20 Spreader

ton	Model Nr.	A	B	C	D
1,0	WR-5	—	223	12,8	94
1,0	A-92	2 1/4" - 14 UN	244	35	158

8 Collar Clamp Head

ton	Model Nr.	A	B	C	D
2,5	MZ-4011	3/4" - 14 NPT	49	76	1 1/2" - 16 UN
5,0	A-192	42	63	50	2 1/4" - 14 UN

15 Rubber Flex Head

ton	Model Nr.	A	B	C
2,5	A-539	3/4" - 14 NPT	44	69
5,0	A-128	1 1/4" - 11 1/2 NPT	86	86

21 Lock Pin

ton	Model Nr.	A	B
2,5	MZ-4013	7,9	41
5,0	A-16	11,2	82

9 Spreader Toe

ton	Model Nr.	A	B	C	D
5,0	A-305	1 1/4" - 11 1/2 NPT	114	25	50

Chains and Attachments for Pulling

16 Single Chain Plate

ton	Model Nr.	A	B	C	D
2,5	A-558	1 1/2" - 16 UN	196	39	44
5,0	A-132	2 1/4" - 14 UN	307	63	79
12,5	A-238	3 5/16" - 12 UN	450	102	125

22 Lock-on Connector

ton	Model Nr.	A	B
2,5	MZ-4007	19	79
5,0	MZ-1050	33	127

10 Serrated Saddle

ton	Model Nr.	A	B	C
2,5	A-531	3/4" - 14 NPT	27	31
5,0	A-18	1 1/4" - 11 1/2 NPT	38	50

17 Double Chain Plate

ton	Model Nr.	A	B	C	D
5,0	A-5	1 1/4" - 11 1/2 NPT	130	50	126

23 Male Lock-on Adaptor

ton	Model Nr.	A	B	C
2,5	MZ-4008	3/4" - 14 NPT	60	19
5,0	MZ-1051	1 1/4" - 11 1/2 NPT	90	33

11 Smooth Saddle

ton	Model Nr.	A	B	C
5,0	A-185	1 1/4" - 11 1/2 NPT	38	50

18 Chain with Hook

ton	Model Nr.	Chain Length
2,5	A-557	1,5 metres
5,0	A-141	1,8 metres
12,5	A-218	2,4 metres

24 Female Lock-on Adaptor

ton	Model Nr.	A	B	C
2,5	MZ-4009	3/4" - 14 NPT	65	19
5,0	MZ-1052	1 1/4" - 11 1/2 NPT	96	33

12 90° V-Base

ton	Model Nr.	A	B	C	D
2,5	A-532	3/4" - 14 NPT	38	47	25
5,0	A-15	1 1/4" - 11 1/2 NPT	54	57	54

Tubes, Connectors and Adaptors

19 Pipe Coupling

ton	Model Nr.	A	B	C
2,5	A-544	3/4" - 14 NPT	42	33
5,0	A-19	1 1/4" - 11 1/2 NPT	49	54
12,5	A-242	2" - 11 1/2 NPT	88	82

25 Adjustable Extension

ton	Model Nr.	A	B	C	D
5,0	A-285	1 1/4" - 11 1/2 NPT	335	441	33

13 Plunger Base

ton	Model Nr.	A	B	C
12,5	A-607	2" - 11 1/2 NPT	166	38

26 Slip-on Extension

ton	Model Nr.	A	B	C
2,5	A-650	3/4" - 14 NPT	200	365